

MICROSOFT EXCEL FUNCTIONS

Business Solutions @ Northbrook

17 Liverpool Gardens, Worthing
West Sussex, BN11 1RY

T (01903) 606 114

E business.solutions@nbcol.ac.uk

W www.northbrook.ac.uk/BusinessSolutions

More and more people are choosing Microsoft Excel as the application of choice for an array of home and workplace activities. Excel's ability to store, administer, analyse, communicate, and present a variety of data means that in the hands of a trained user Excel is an extremely powerful tool. Our one day workshops will give you all the knowledge you need to make Microsoft Excel work for you.

Who is this course for?

This workshop is aimed at people who want to learn more about the many functions available in Excel.

What if I can't fit it in?

The Business Solutions @ Northbrook team understand how hectic life can be sometimes; it's for this reason that we're happy to customise this workshop for individual employers and ensure flexible delivery, either on your premises or at Northbrook College (A company costing will be provided once your training needs are finalised).

What do I gain on completion?

Upon completion of this half day workshop you will receive a Northbrook College Certificate of Attendance, easy to follow handouts, and enough knowledge to proceed and progress onto other workshops and IT courses. Oh, and don't worry - there are no examinations or assessments on this course!

What are the specific details?

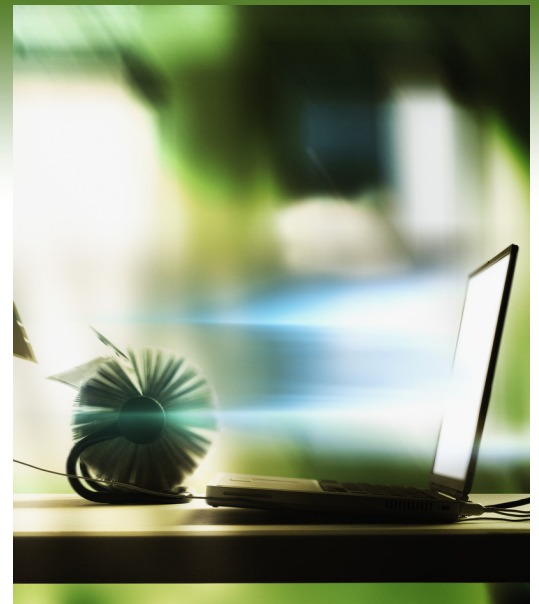
> **Duration**
Half day, 3 hours

> **Dates Available**
For the latest workshop dates please check out our website or call our Customer Services team who will be happy to help.

> **Venue**
Will be confirmed upon booking (if advance notice is required, please call our Customer Services team)

> **Cost**
£50 per person, per workshop*
* Group rates may apply

For further information, enrolment, or to arrange a free visit from one of our Business Training Advisers to discuss eligibility and options open to you and your staff, please contact the Business Solutions @ Northbrook team via one of the methods at the top right of this page.



Do I need any experience?

A basic knowledge of Microsoft Excel is essential.

What will I learn on this course?

This workshop will cover:

- > Review of basic functions
- > Relative and absolute references
- > Logical functions (IF, AND, OR, SUMIF)
- > Date and text functions